



THERMOFLAN

Equipment & products

**Engraving**

**Cutting, engraving ...**

**Versatility of  
CO2 laser Technology**



All our lasers can handle batch runs from small to large volumes, providing on-the-spot and just-in-time production. Any windows graphic such as image, logo or text, can be "printed" by the laser on wood, acrylic, glass, stone...

Lasers have two working modes :

**ENGRAVING** : Business gifts, promotional items, trophies, rubber stamps, wooden and enamel writing items, printing screens and cliches machine front plates....

**CUTTING** : Masks and stencils, architectural models, templates, membrane switch, card stock....

**LTT**

In partnership with **LTT, Thermoflan** can offer a wide range of CO2 laser equipment

Founded in 1987, **LTT**'s sole activities are the design and manufacture of industrial laser systems. LTT machines are divided in 2 series

- versatile and user-friendly **V and ILS series**, widely used for engraving and cutting purposes : plaques, rubber stamps, industrial marking, stencils, funeral plates, product customization...

- **I serie** designed for industrial applications with very fast movements and accelerations and the possibility of adding Ccd camera vision. The 4 openable doors reduce part size limits and allow to engrave / cut large materials.

All our lasers are equipped with RF laser tube of US origin and very precise mechanical and guiding system of Japanese origin.

They are designed for long durability, even in case of intensive use, and user friendly operation (driver, intuitive control touch panel)

### Many possible applications :

Engraving Cutting

	Engraving	Cutting
Acrylics	Yes	Yes
Anodized aluminum	Yes	No
Wood	Yes	Yes
Rubber	Yes	Yes
Tile	Yes	No
Céramic	Yes	No
Leather	Yes	Yes
Delrin	Yes	Yes
Glass fiber	Yes	Yes
Stainless steel, Titanium, Brass (with themark)	Yes	No
Marble	Yes	No
Melamine	Yes	Yes
Painted metal (no bare metal)	Yes	No
Coated metal	Yes	No
Mylar	Yes	Yes
Paper - carton	Yes	Yes
Plastic (not containing chlorine)	Yes	Yes
Fabrics	Yes	Yes
Glass	Yes	No



SPECIFICATIONS	V2000 - 30 / 60	V3000 - 30 / 40 / 60 / 80 / 100	ILS III - 30 / 40 / 60 / 80 / 100	I3000 - 30 / 40 / 60 / 80 / 100	I4000 - 30 / 40 / 60 / 80 / 100
<b>Laser source</b>	US RF CO2 laser tube - 30/60 Watts - air cooled	US RF CO2 laser tube - 30/40/60/80/100 Watts air cooled	US RF CO2 laser tube - 30/40/60/80/100 Watts air cooled	US RF CO2 laser tube - 30/40/60/80/100 Watts air cooled	US RF CO2 laser tube - 30/40/60/80/100 Watts air cooled
<b>Standards</b>	Openable left / right doors for passage of large sized parts. Automatic focusing by mechanical probe. Red laser pointer to simulate work or define origin point. Honeycomb cutting table to reduce burning marks when cutting.	Openable left / right doors for passage of large sized parts. Automatic focusing by mechanical probe. Red laser pointer to simulate work or define origin point. Honeycomb cutting table to reduce burning marks when cutting.	Openable front/ back doors for passage of large sized parts. Automatic focusing by mechanical probe. Red laser pointer to simulate work or define origin point. Honeycomb cutting table to reduce burning marks when cutting.	Openable front/ back/right/left doors for passage of large sized parts. Automatic focusing by mechanical probe. Red laser pointer to simulate work or define origin point. Honeycomb cutting table to reduce burning marks when cutting.	Openable front/ back/right/left doors for passage of large sized parts. Automatic focusing by mechanical probe. Red laser pointer to simulate work or define origin point. Honeycomb cutting table to reduce burning marks when cutting.
<b>Working area</b>	450 x 310 mm	610 x 420 mm	660 x 495 mm	700 x 500 mm	1000 x 600 mm
<b>Automatic motorized Z axis adjustment</b>	from 0.03 mm to 150 mm max	from 0.03 mm to 150 mm max	from 0.03 mm to 210 mm max	from 0.03 mm to 230 mm max	from 0.03 mm to 230 mm max
<b>Maximum processed part sizes</b>	no limit x 310 mm x 150 mm	no limit x 420 mm x 150 mm	660 mm x no limit x 210 mm	700 mm x no limit x 230 mm	1000 mm x no limit x 230 mm
<b>Working speed</b>	adjustable from 0 to 100 % - 1524 mm / secs	adjustable from 0 to 100 % - 1524 mm / secs	adjustable from 0 to 100 % - 1524 mm / secs	adjustable from 0 to 100 % - 3050 mm / secs 6 G acceleration	adjustable from 0 to 100 % - 3050 mm / secs - 6 G acceleration
<b>Interface</b>	USB or ethernet (optional)	USB or ethernet (optional)	USB or ethernet (optional)	USB or ethernet (optional)	USB or ethernet (optional)
<b>Software</b>	Compatible with most Windows integrated CAD softwares (Coreldraw, Autocad, Illustrator, Inkscape ...)	Compatible with most Windows integrated CAD softwares (Coreldraw, Autocad, Illustrator, Inkscape ...)	Compatible with most Windows integrated CAD softwares (Coreldraw, Autocad, Illustrator, Inkscape ...)	Compatible with most Windows integrated CAD softwares (Coreldraw, Autocad, Illustrator, Inkscape ...)	Compatible with most Windows integrated CAD softwares (Coreldraw, Autocad, Illustrator, Inkscape ...)
<b>Sizes - Weight</b>	680 x 665 x 423 mm - 75 kgs	825 x 815 x 510 mm - 95 to 115 kgs according to tube power	900 x 865 x 990 mm - 180 to 210 kgs according to tube power	1150 x 720 x 1064 mm - 220 to 250 kgs according to tube power	1450 x 820 x 1064 mm - 280 to 310 kgs according to tube power
<b>Safety standards</b>	CDRH laser : class 1 - Red pointer : class 2 - CE standard	CDRH laser : class 1 - Red pointer : class 2 - CE standard	CDRH laser : class 1 - Red pointer : class 2 - CE standard	CDRH laser : class 1 - Red pointer : class 2 - CE standard	CDRH laser : class 1 - Red pointer : class 2 - CE standard

OPTIONS	V2000 - 30 / 60	V3000 - 30 / 40 / 60 / 80 / 100	ILS III - 30 / 40 / 60 / 80 / 100	I3000 - 30 / 40 / 60 / 80 / 100	I4000 - 30 / 40 / 60 / 80 / 100
<b>Exhaust system</b>	Soundproof outside exhaust unit : 600 m3 / hour AD 180 fume filtration unit : Pre+ hepa + carbon filters : 200 m3 / h	Soundproof outside exhaust unit : 600 m3 / hour Oracle fume filtration unit :Pre+ hepa + carbon filters : 400 m3 / hour	Soundproof outside exhaust unit : 600 m3 / hour Oracle fume filtration unit :Pre+ hepa + carbon filters : 400 m3 / hour	Soundproof outside exhaust unit : 600 m3 / hour Oracle fume filtration unit :Pre+ hepa + carbon filters : 400 m3 / hour	Soundproof outside exhaust unit : 600 m3 / hour Oracle fume filtration unit :Pre+ hepa + carbon filters : 400 m3 / hour
<b>Air pump</b>	Air assistance on optics by 1 bar compressor	Air assistance on optics by 1 bar compressor	Air assistance on optics by 1 bar compressor	Air assistance on optics by 1 bar compressor	Air assistance on optics by 1 bar compressor
<b>Lens</b>	1"5, 2.0" or 4.0" lens	1"5, 2.0" or 4.0" lens	1"5, 2.0" or 4.0" lens	1"5, 2.0" or 4.0" lens	1"5, 2.0" or 4.0" lens
<b>Rotary device</b>	220 x 491 x 122 mm diameter 120 mm x 300 mm	220 x 600 x 122 mm diameter 120 mm x 415 mm	220 x 600 x 193 mm diameter 250 mm x 415 mm	220 x 600 x 193 mm diameter 250 mm x 415 mm	220 x 600 x 193 mm diameter 250 mm x 415 mm
<b>Others</b>	Honeycomb cutting table with vacuum dust collector	Honeycomb cutting table with vacuum dust collector	Honeycomb cutting table with vacuum dust collector	CCD camera with mark recognition software Honeycomb cutting table with vacuum dust collector	CCD camera with mark recognition software Honeycomb cutting table with vacuum dust collector





# Engraving

## Equipments & products

### MACHINE DRIVER

LTT has developed a specific easy-to-use software complying with user's needs. By means of 8 colors, it is possible to adjust the laser power, speed and resolution. Each of the 3 working modes will treat each color according to application:

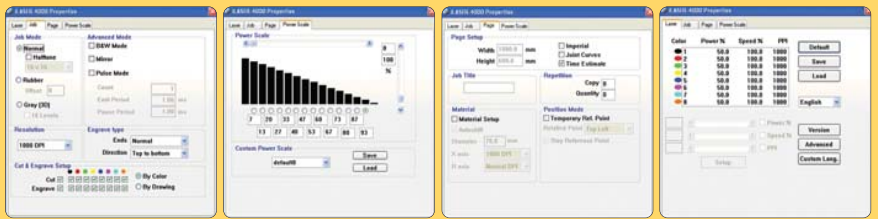
In **normal mode**, laser engraves according to dot density : area with more dots will appear darker.

In **photo mode**, it is possible to engrave photos on materials (aluminum, wood, acrylic) with no need for a graphic software (such as Photoshop) or specific software (such as Photograv)

The specific functions of **stamp mode** : shoulder, offset, mirror and reverse will make you a professional of stamp making.

With the last, but not least, **3d effect mode**, the laser will use a 256 gray scale, corresponding to different laser powers, to produce a 3d effect engraved result.

This driver is compatible with all Windows based applications.



### OPTIONS



#### Air pump

Required for air assistance, to release smokes and dust from the focusing lens.

#### Smoke and dust extraction units

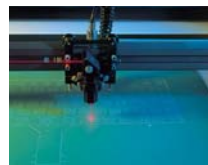
Used for local extraction of dust, smoke particles and gases, to preserve laser optics and operator's health.

Polluted air is collected and brought to the filtering system by an extraction pipe. It is sucked in by the turbines, filtered and released into the environment with no risk of pollution.



#### Vacuum table

Cutting table with vacuum function, to reduce burning marks at the backside and prevent smoke release by driving debris directly to the bottom of the tablet and to the extraction unit



#### Red dot pointer

The red dot shows the laser beam position over the entire working surface. It can be used as a preview tool to see exact positioning before starting a job.

#### Rotary device

To engrave on almost all cylindrical objects. Replacing one object with another takes only a few seconds. Automatic diameter adjustment makes it one of the fastest and most versatile rotary tool



#### Honeycomb cutting table

It's the perfect tool for cutting. It reduces burning marks on the backside, by raising the processed material. Very easy to use, it is just necessary to place it on the laser table



### CONSUMABLES



#### Alumamark :

CO2 laser markable anodized aluminum plate. Alumamark produces black images on anodized aluminum background Available in 2 thicknesses : 0.13 mm, 0.5 mm and 4 colors : silver, gold, bronze, brass.

#### Thermark :

For laser marking on metals (stainless steel, brass, aluminum, titanium, ...) or glass Product can be sprayed or applied with a brush (100 grs bottle).

#### Laserable rubber :

For rubber stamp manufacture Thickness = 2.3 mm.

#### Laserable plates:

Wide choice of colors and materials specially developed for laser engraving and cutting. (see specific documentation).

259 Chemin de la Côte  
30120 MOLIERES-CAVAILLAC (FRANCE)

Tél. +33 (0)4 67 81 14 41  
Fax. +33 (0)4 67 81 09 80



THERMOFLAN

E-mail. [info@thermoflan.com](mailto:info@thermoflan.com)  
[www.thermoflan.com](http://www.thermoflan.com)

S.A.S au capital de 300000 euros  
SIRET 720 201 961 00011  
RCS 72B196 NIMES